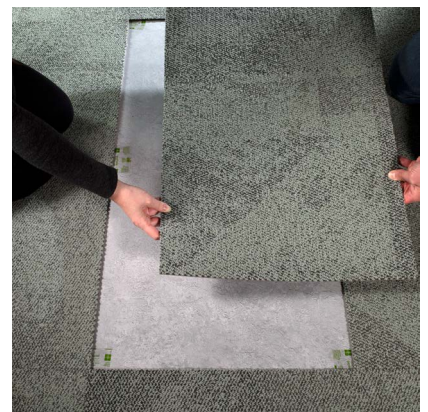
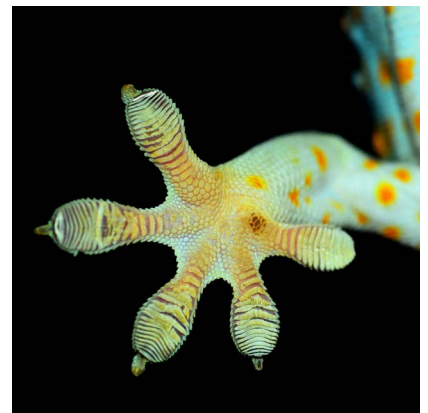


Interface®



**TacTiles®**

Glue-free carpet tile installation



TacTiles®



# TacTiles®

easy.  
quick.  
clean.

The combination of simplicity, speed and great environmental qualities make TacTiles the perfect fit for Interface carpet tiles.

Inspired by the gecko's ability to seemingly "stick" to surfaces, TacTiles connect the carpet tiles to each other, creating a 'floating floor' that doesn't shrink or expand. That's how we eliminate the need for glue. No damage to the subfloor and no sticky mess during the installation.

**TacTiles make carpet tile installation easy, quick and clean.**



# Simple installation.

## No mess, no odour, no downtime

TacTiles make life easy for professional installers. Conditions required are the same as for any carpet tile installation; no extra preparation of the subfloor and brush and roller are not needed either. The small boxes of 500 TacTiles, with a weight of just 1 kg, are easy to carry, transport and store. That's a lot easier to handle than a bucket of glue.

Installation can start immediately, without the drying time required for glue. Just pull, peel and stick – no special equipment is needed.

## Quick removal or repurpose

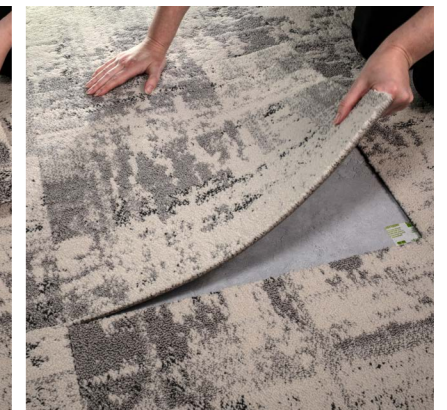
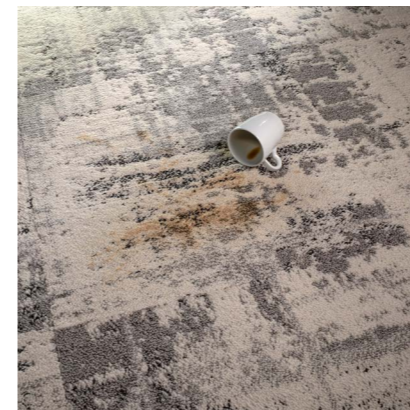
When you have new demands for your space, modular flooring is easy to remove and repurpose in different designs. TacTiles enhance this capability. Removal or replacement is quick and easy, whether you're replacing a single damaged tile or overhauling your office.

After installation, there is very little waste and no tools to clean or buckets to dispose of. If you have a raised access floor, TacTiles make access easy and quick.



## TacTile Facts

- No drying or waiting time
- No damage to the subfloor
- Resistant to moisture and temperature
- Box of 500 TacTiles (weight 1 kg)





TacTiles®



# A sustainable choice.

## Lower environmental footprint

TacTiles are a win-win for you as well as the environment. Even the lowest-emitting glues often emit more VOCs than the carpet itself. TacTiles emit virtually no VOCs, and are completely odour free. This means fewer complaints from personnel and a healthier working environment in general.

TacTiles are also made from PET, this means they are easily recyclable. They save weight in shipping and don't damage the subfloor. TacTiles are compliant with all current green building schemes.

Carpet tiles installed with TacTiles are easy to remove, reuse or recycle. The subfloor remains clean, and the carpet tiles have no glue residue on them. Both are ready for reuse.



## TacTiles Facts

- Virtually zero VOCs
- Made from recyclable PET
- Leaves no residue on carpet tile
- Less waste - no pails or boxes of glue and associated materials



## Europe, Middle East & Africa

AE	+971 44508175
AT	+43 1 8102839
BA	+387 33 522 534
BE	+32 2 475 27 27
BG	+359 2 808 303
BY	+375 17 226 75 14
CH	+41 44 913 68 00
CZ	+42 0 233 087 111
DE	+49 2151 3718 0
DK	+45 33 79 70 55
EE	+372 6518 313
ES	+34 932 418 750
EG	+(202) 3760 7818
FR	+33 1 58 10 20 20
GR	+30 211 2120820
HR	+385 14 62 30 63
HU	+36 1 349 6545
IE	+353 1 679 8466
IL	+972 97403034
IT	+39 02 890 93678
KZ	+7 701 391 88 13
LT	+370 37 337332
LV	+371 672 18 744
NL	+31 33 277 5555
ME	+381 11 414 92 00
MK	+389 2 323 01 89
NO	+47 23 12 01 70
PL	+48 22 862 48 40
PT	+351 217 122 740
RO	+40 21 317 12 40/42/43/44
RS	+381 11 414 92 00
SA	+966 554622263
SE	+468 241 230
SK	+421 911 104 073
SI	+386 8 205 4007
TR	+ 90 212 248 97 77
UA	+38(044)238 27 67
UK	+44 (0)800 3134465
ZA	+27 11 608 4270

[www.interface.com](http://www.interface.com)



Climate change is undeniable. And reversible. Our mission is to prove it. Join the #ClimateTakeBack and help create a climate fit for life.

11/2023